

## Did you know?

Royal Homes supports the United Nations Sustainable Development Goals. Specifically goal 12.5 which is to substantially reduce waste generation through prevention, reduction, recycling and reuse. The Royal Homes factory reduces waste by reusing scrap and has had a recycling program for many years. We feel that prefabricating our homes in a factory allows us to better control how scrap materials are handled. This control enables us to efficiently minimize the amount of waste that goes to landfill.



SIMPLE LIVING

TWO STOREY HOMES

Built Strong, **Smart & Green.**  
Find a design centre near you.

### Innisfil Design Centre

2014 Commerce Park Drive  
Innisfil, Ontario L9S 4A3  
Tel: 888-739-5122 | Fax: 705-436-5522  
Local: 705-436-1001  
E: innisfil@royalhomes.com

### Peterborough Design Centre

955 Hwy 7 East, RR 7  
Peterborough, Ontario K0L 2G0  
Tel: 800-659-0980 | Fax: 705-748-5849  
Local: 705-748-3283  
E: peterborough@royalhomes.com

### Wingham Design Centre

40498 Amberley Road  
Wingham, Ontario N0G 2W0  
Tel: 800-265-3040 | Fax: 519-357-2508  
Local: 519-357-2444  
E: wingham@royalhomes.com

### Gravenhurst Design Centre

2298 Highway 11N  
Gravenhurst, Ontario P1P 1R1  
Tel: 866-782-0033 | Fax: 705-687-0813  
Local: 705-687-3546  
E: gravenhurst@royalhomes.com

### Minden Design Centre

RR #1, Hwy #35 South, Box 395  
Minden, Ontario K0M 2K0  
Tel: 888-717-4923 | Fax: 705-286-1394  
Local: 705-286-6992  
E: minden@royalhomes.com

### Sarnia Design Centre

286 London Road  
Sarnia, Ontario N7T 4W1  
Tel: 833-337-8686  
Local: 519-337-8686  
E: sarnia@royalhomes.com



213 Arthur Street, P.O. Box 370 | Wingham, Ontario, Canada N0G 2W0  
Tel: (519) 357.2606 | Toll Free: 1.800.265.3083 | E-mail: Royal@RoyalHomes.com  
[RoyalHomes.com](http://RoyalHomes.com)

\*Actual usable floor space may vary from stated floor area. Copyright by Royal Homes. All designs, floor plans and elevations contained herein are the exclusive property of Royal Homes. No home may be constructed in accordance with these plans, except as authorized in writing by the copyright owner. Plans are artist renderings only. For exact dimensions and specifications, please see blueprints.

11/2023

# Carling

↔ 1611 sq.ft.

🛏 3 beds

🚿 2 baths



Your lot. Your dream.  
Custom Built.

213 Arthur Street, P.O. Box 370 | Wingham, Ontario, Canada N0G 2W0  
Tel: (519) 357.2606 | Toll Free: 1.800.265.3083 | E-mail: Royal@RoyalHomes.com | [RoyalHomes.com](http://RoyalHomes.com)



# Scenic Views. Modern Living.

The Carling proves that a house can be spacious without imposing on its natural surroundings. The inviting layout and stone exterior are features that help make this model unique. The kitchen boasts an extended eating bar and opens onto the dinette and great room – an excellent set-up for entertaining. The dinette even has a high, cathedral ceiling. Meanwhile, 2 bathrooms and 3 bedrooms (including one with a sizeable walk-in closet) provide all the private living space you need. Add in the many customization options available from Royal Homes, and it is clear that the Carling is an ideal home!

## Customization

- Add a large deck off the Great Room and Dinette
- Add a Cathedral Ceiling Dinette
- Add a fireplace in the Great Room

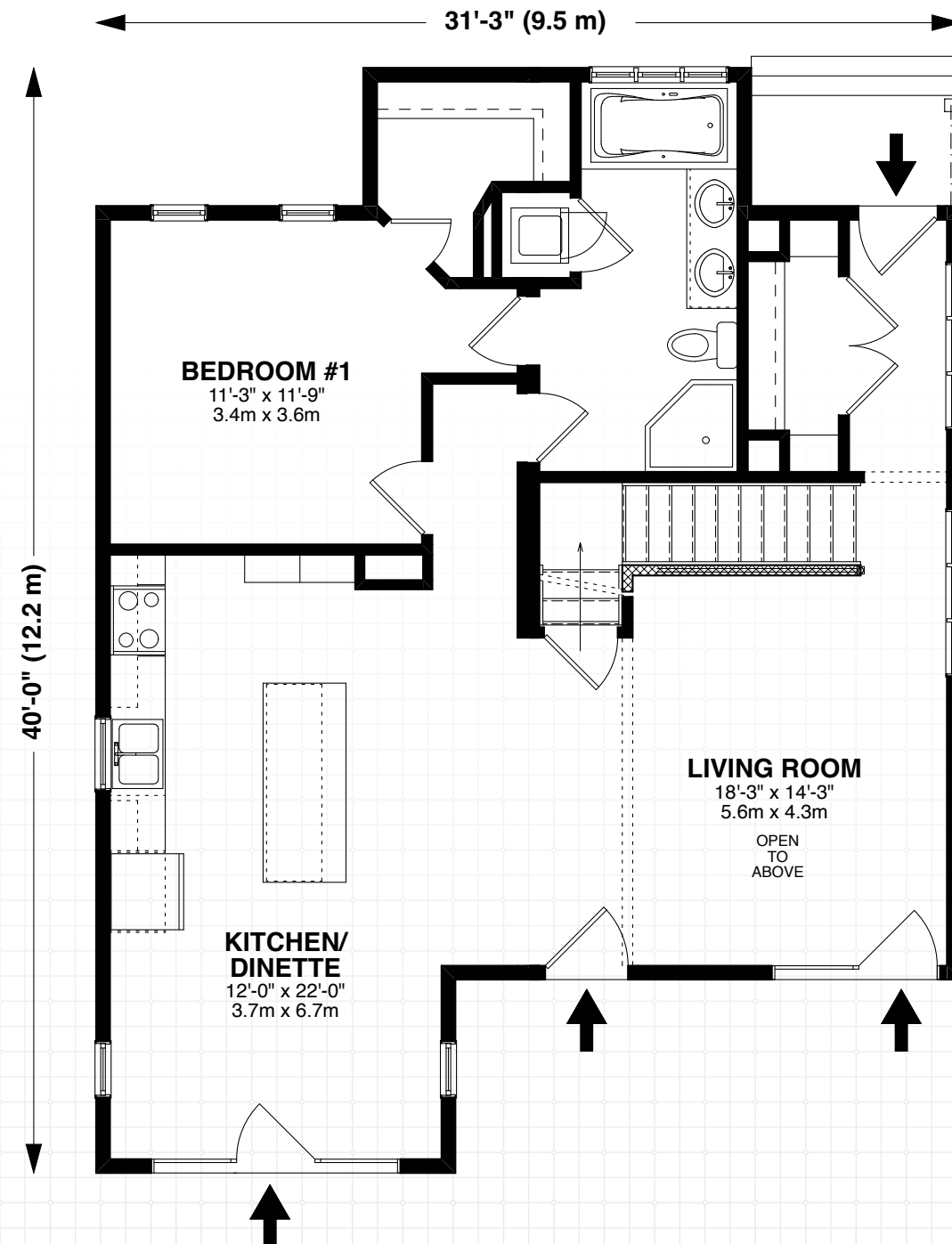
## Highlights

- Spacious Kitchen & Island with Extended Bar
- Main Floor Primary Bedroom with Walk-In & Full Ensuite
- Open concept Kitchen and Living Room

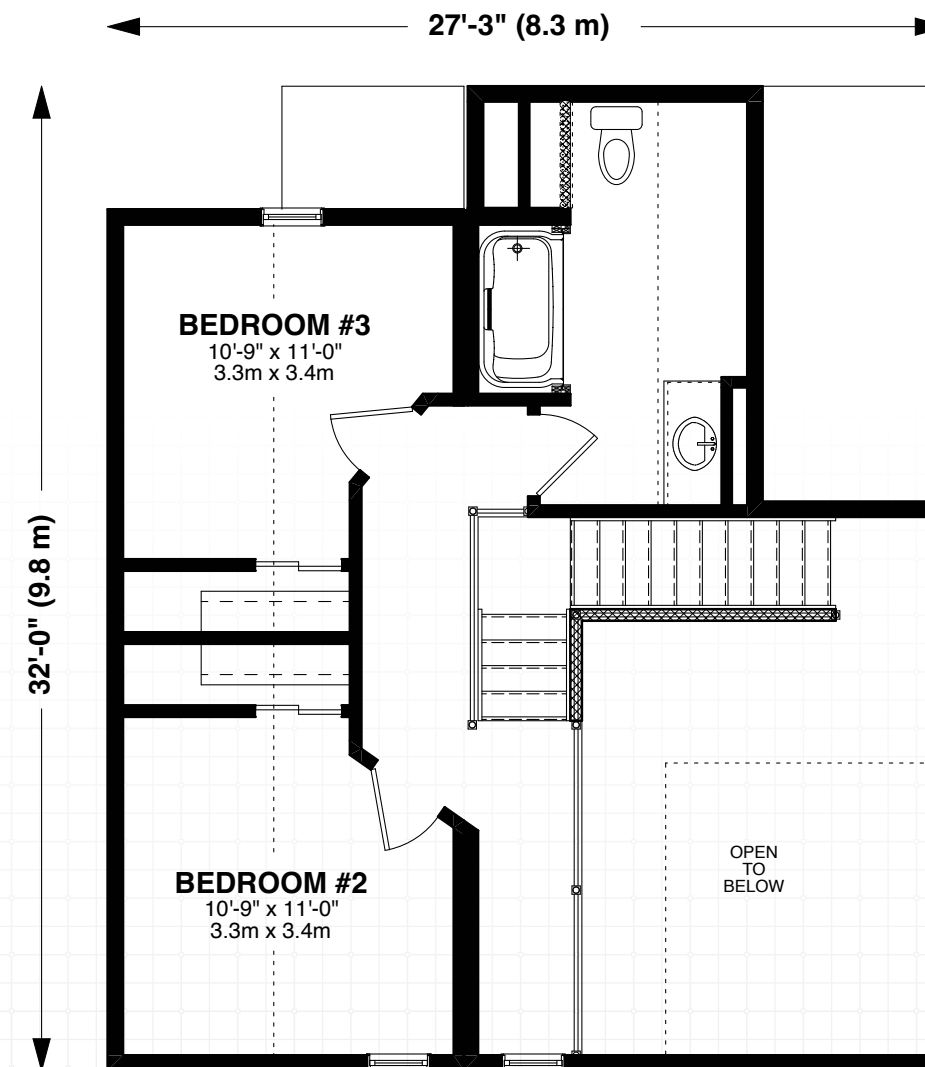
## Features of Every Custom Home

- Built Indoors safe from the elements
- Standard Heat Recovery Ventilators
- Barrier-free options available

Main Floor



Upper Floor



At Royal Homes, we are committed to creating the home that works for you and your family. With the thousands of custom options available for personalizing every inch of living space, your dream home can be a reality with Royal Homes!

