

Did you know?

Royal Homes supports the United Nations Sustainable Development Goals. Specifically goal 12.5 which is to substantially reduce waste generation through prevention, reduction, recycling and reuse. The Royal Homes factory reduces waste by reusing scrap and has had a recycling program for many years. We feel that prefabricating our homes in a factory allows us to better control how scrap materials are handled. This control enables us to efficiently minimize the amount of waste that goes to landfill.



Built Strong, **Smart & Green.**
Find a design centre near you.

Innisfil Design Centre

2014 Commerce Park Drive
Innisfil, Ontario L9S 4A3
Tel: 888-739-5122 | Fax: 705-436-5522
Local: 705-436-1001
E: innisfil@royalhomes.com

Peterborough Design Centre

955 Hwy 7 East, RR 7
Peterborough, Ontario K0L 2G0
Tel: 800-659-0980 | Fax: 705-748-5849
Local: 705-748-3283
E: peterborough@royalhomes.com

Wingham Design Centre

40498 Amberley Road
Wingham, Ontario N0G 2W0
Tel: 800-265-3040 | Fax: 519-357-2508
Local: 519-357-2444
E: wingham@royalhomes.com

Gravenhurst Design Centre

2298 Highway 11N
Gravenhurst, Ontario P1P 1R1
Tel: 866-782-0033 | Fax: 705-687-0813
Local: 705-687-3546
E: gravenhurst@royalhomes.com

Minden Design Centre

RR #1, Hwy #35 South, Box 395
Minden, Ontario K0M 2K0
Tel: 888-717-4923 | Fax: 705-286-1394
Local: 705-286-6992
E: minden@royalhomes.com

Sarnia Design Centre

286 London Road
Sarnia, Ontario N7T 4W1
Tel: 833-337-8686
Local: 519-337-8686
E: sarnia@royalhomes.com

Mapleridge

↔ 2,844 sq.ft.

🛏 5 bed

🚿 3.5 bath



213 Arthur Street, P.O. Box 370 | Wingham, Ontario, Canada N0G 2W0
Tel: (519) 357.2606 | Toll Free: 1.800.265.3083 | E-mail: Royal@RoyalHomes.com
RoyalHomes.com

*Actual usable floor space may vary from stated floor area. Copyright by Royal Homes. All designs, floor plans and elevations contained herein are the exclusive property of Royal Homes. No home may be constructed in accordance with these plans, except as authorized in writing by the copyright owner. Plans are artist renderings only. For exact dimensions and specifications, please see blueprints.

09/2024

Your lot. Your dream. Custom Built.

213 Arthur Street, P.O. Box 370 | Wingham, Ontario, Canada N0G 2W0
Tel: (519) 357.2606 | Toll Free: 1.800.265.3083 | E-mail: Royal@RoyalHomes.com | RoyalHomes.com



Scenic Views. Modern Living.

The Mapleridge is a modern 5-bedroom home that has 2 bedrooms with ensuite bathrooms and walk-in closets. One of these bedrooms is on the first floor for easy access and the upstairs ensuite has a shower and soaker tub. In addition to the 4 bedrooms upstairs there is also an office conveniently located at top of the stairs. The kitchen has a large island and is open to the dining room, ideal for entertaining. The large patio doors in the dining room provide great access to the garden. The mudroom has a laundry area with a large countertop and a 2-piece bathroom, the large walk-in pantry is perfectly located between the mudroom and kitchen. The Mapleridge has everything you need in a large family home.

Customization

- Add a deck off the kitchen / dining room
- To create the perfect kitchen, add some upper cabinets with glass options
- Add a fireplace in the living room

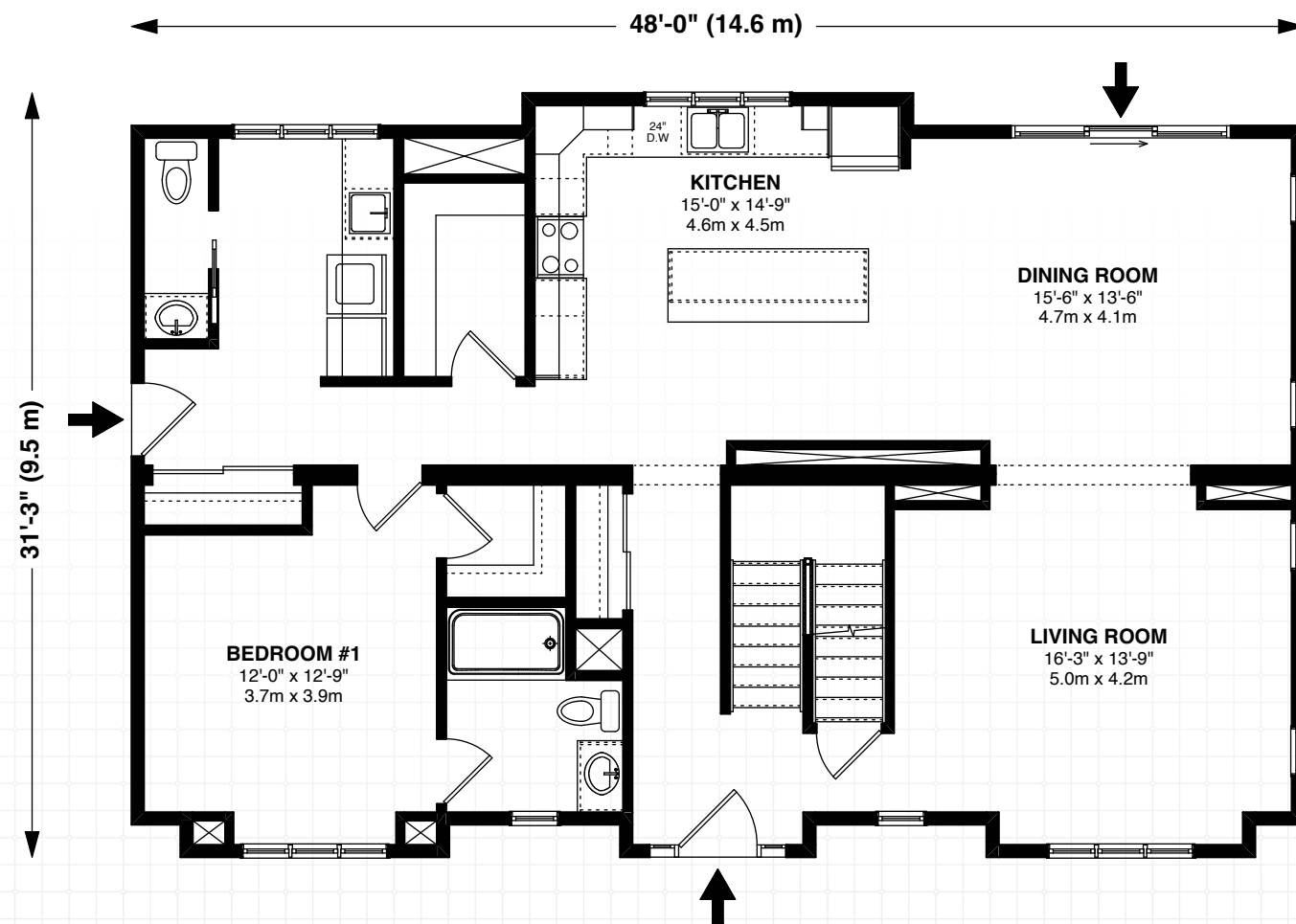
Highlights

- 5 bedrooms, plus an office
- 2 bedrooms with ensuite and walk-in closets
- Kitchen with large island and pantry is open to the dining room

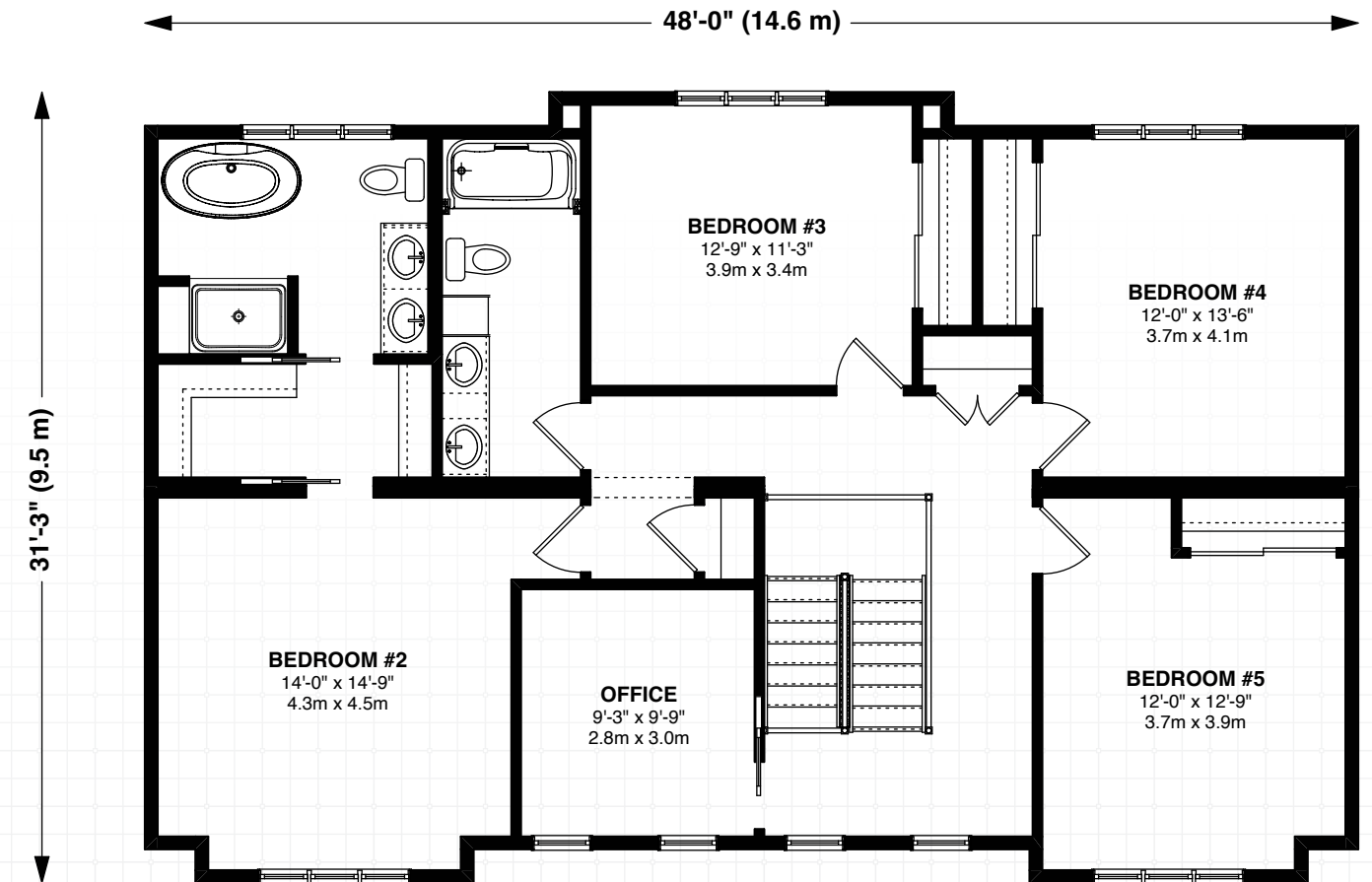
Features of Every Custom Home

- Recycled & renewable materials
- 5 year no leak foundation warranty
- Exceptionally tight weather sealing

Main Floor



Upper Floor



At Royal Homes, we are committed to creating the home that works for you and your family. With the thousands of custom options available for personalizing every inch of living space, your dream home can be a reality with Royal Homes!

